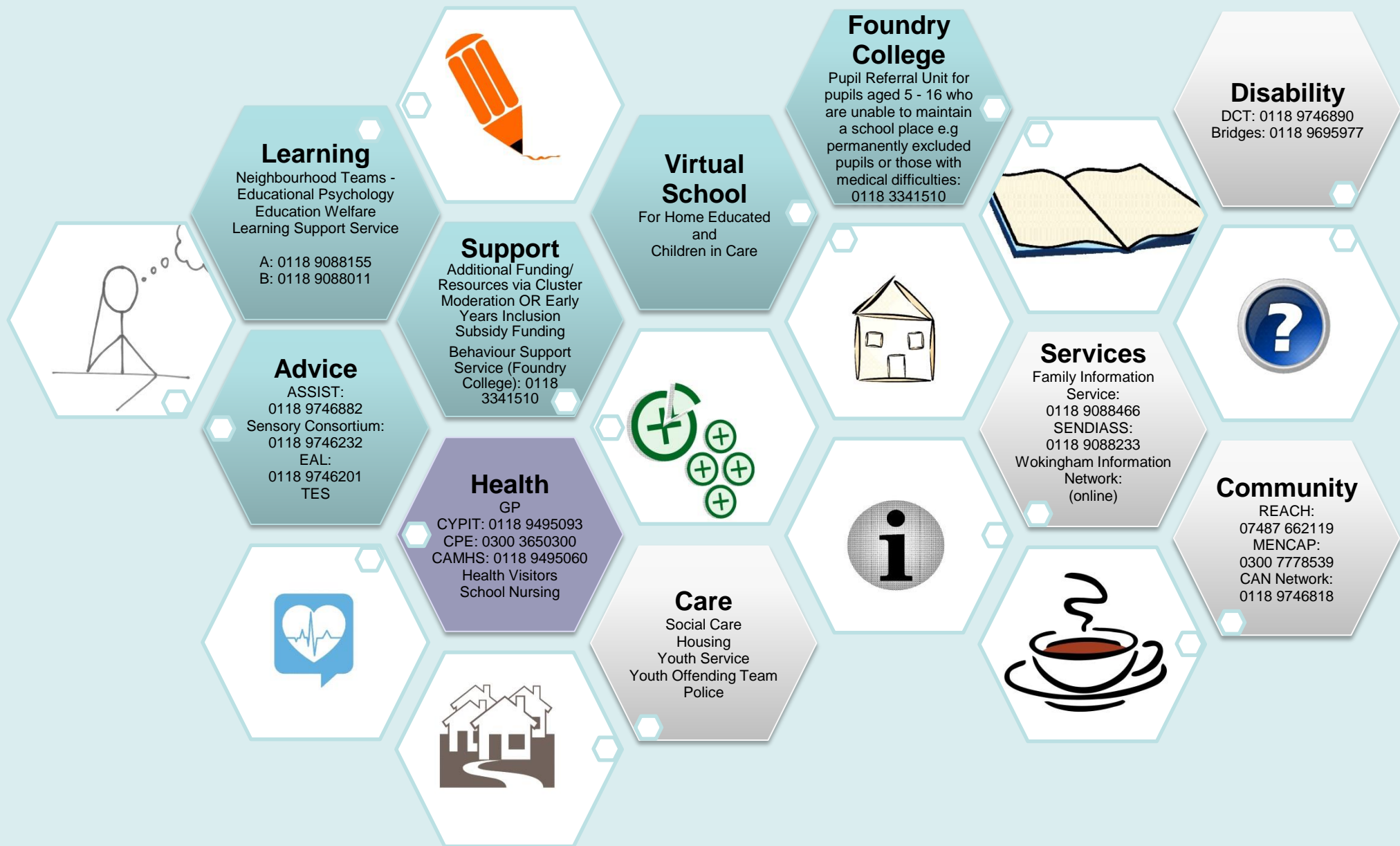


Intervention Resources to Support Learning & Achievement

**WOKINGHAM
BOROUGH COUNCIL**

Wokingham Schools Hub:
wsh.wokingham.gov.uk



Specialist Provision
Accessed only with a Statement or EHC Plan
The SEN Team co-ordinates assessments and monitors support for 0 – 25 children and young people in education or training
0118 974 6216 or sen@wokingham.gov.uk

Severe & Profound Learning Difficulties

Addington
A special school for boys and girls aged 2 – 19 years (Provides outreach)
0118 9669073

Hearing Impairment

Ambleside Nursery
A nursery resource unit
0118 3776444

Emmbrook Infant
An infant resource unit
0118 9784259

Emmbrook Junior
A junior resource unit
0118 9784940

Social & Emotional Needs

Northern House
A special school for boys (and girls) aged 10 – 16 years (Provides training)
0118 9771293

Autism

Wescott Infant
An infant resource unit (Provides training)
0118 9786313

Westende Junior
A junior resource unit (Provides training)
0118 9786682

St Crispins
A secondary age resource unit
Opening Sept 2017
0118 9781144

Speech & Language Difficulties

Highwood
A primary resource unit
0118 9265493

Physical Difficulties with Complex Needs

All Saints Primary
A primary resource unit
0118 9787173

Lambs Lane Primary
A primary resource unit
0118 9883820

Each cluster has an allocated Case Officer with whom SENCOs can discuss concerns and issues when they arise.