



# Foundry College Primary Outreach Prospectus 2023

It takes commitment to change lives



## Meet the Team



My name is Amy. Over the last 21 years I have worked in a variety of educational settings supporting children with behavioural, emotional and special educational needs. I began my journey working in the primary classroom of a Pupil Referral Unit; since then, I have worked in an Autism Resource base within a mainstream secondary school, an Inclusion Classroom within a mainstream secondary school, and as a Cover Supervisor / Behaviour Support in a mainstream middle school; I joined the 'Foundry Family' as a Behaviour Specialist in April 2016. I am Nurture Assistant trained, as well as holding Higher Level Teaching Assistant status. In addition to this I am a Team Teach Intermediate Trainer, and also lead on KS1 and KS2 outreach transition. I love working with all children; however, my passion lies with those who have Special Educational Needs and Disabilities; with a particular interest in ADHD and Children's Mental Health. I strive to support our schools, young people, and their families, to the best of my ability following Foundry College's values of 'Nurture, Inspire, Achieve'; our commitment is to changing lives.



Hi! My name is Kate. Prior to starting my role as an outreach Behaviour Specialist at Foundry College I worked in a number of Wokingham Borough primary schools as a qualified Teacher, Teaching Assistant and one to one support for children with Special Educational Needs, behavioural needs and social and emotional difficulties. I therefore understand the daily pressures encountered when working within a school environment, and aim to provide manageable, timely and resolution focused strategies to support pupils needs as well as further equip staff working with them. Outside of work I have run exercise classes and resilience workshops for children and young people who attend both mainstream and special educational settings. I have long believed that my purpose in life is to make a difference to the lives of others, particularly children and young people, ensuring they have the confidence, resilience and skills to excel and go after what they want in life. This begins with building trusting, respectful relationships, allowing them to feel seen, safe and heard. I am privileged to do a job I adore, whilst playing a positive part in the lives of our next generation.

It takes commitment to change lives



My name is Sandra. I have been working with children for around 30 years, initially as a registered childminder as part of a special needs network, before moving into the field of behaviour support in 2002. I joined a newly developed Behaviour Improvement Programme in Reading, before a brief placement in a mainstream school as a Nursery Nurse and 1:1 support assistant. I joined Wokingham Borough in 2005 working for Children's Services Behaviour and Emotional support team, leading to becoming a Certified Theraplay® Therapist and Behaviour Specialist. I am Nursery Nurse trained with a CACHE Certificate in Child Care and Education Level 3, as well as holding HLTA status with Behaviour Specialism. I hold a Higher Education Certificate in Autism Spectrum Disorders, a Certificate in Health and Social Care and also a certificate in Sensory Processing Disorders. I am passionate about supporting all children and enabling them to achieve to the very best of their ability; however, my heart lies within the field of Attachment and Trauma after competing four years of study to become a Certified Theraplay® Practitioner in 2017. As part of the 'Foundry Family' and a Family Therapist, I am able to work within my personal commitment to changing lives and values to Nurture, Inspire, Achieve, in line with those of Foundry College.



My name is Lydia and I have worked in the Outreach Team at Foundry College since Easter 2019. While my three children were in school, I worked for 12 years as a Primary TA and HLTA with pupils of all abilities, including those with SEN and attachment difficulties. I gained an honours degree in Children's Development and Learning from Reading University which has helped my theoretical understanding of children's behaviours alongside my practice. I am trained in Theraplay® (Level One) and I love all aspects of supporting children through play, understanding their needs, and building trusting genuine relationships. My real passion is around risky play which is said to encourage children to tackle challenges, to build resilience, increase self-esteem and improve their skills for life. I really want the best for every child that I work alongside and strive to do all that I can to support them to feel safe, happy and to have a positive outlook on their future aspirations.

It takes commitment to change lives



Hello! My name is Laura and I am part of the lovely Foundry Outreach team. I began my career working as a Teaching Assistant in both primary and secondary Pupil Referral Units as well as supporting SEN children in mainstream schools. I gained my Bachelor of Education Honours degree in Primary Education and taught in schools within Wokingham Borough for six years. I have always been passionate about building strong relationships with children, especially supporting those who face challenges and barriers to their learning. I am particularly interested in implementing strategies to enable children with ADHD to thrive. Although I understand the conflicting pressures encountered when working within a school environment, I believe that positive experiences and mental health of every pupil should be prioritised; I aim to support schools and families analyse the root cause of certain behaviours and promote a resolution focused outcome, in line with the Therapeutic Thinking approach. I absolutely love my role as a Behaviour Specialist and I am committed to improving the aspirations and life chances of young people.



My Name is Hayley. I have twenty years of experience working with children and their families and am currently studying for a degree in Children's Development and Learning with The University of Reading. In my early career, I worked in a day nursery where I gained my NVQ Level 3 in Child Care and Education. I later worked as a family Nanny before taking a short break to have my daughter. Later, I moved into mainstream education where I worked as a 1:1 teaching assistant and Lunchtime controller supporting children with additional needs. It was there that I developed my passion for supporting children with special educational needs, behavioural needs and social and emotional difficulties. I developed my TA role to support these children throughout the school and trained as a Nurture Assistant. Some of my skills involve writing social stories, using comic strip conversation, drawing whilst talking, understanding sensory needs, autism and ADHD awareness and an understanding of children's mental health. I am deeply passionate about the work I do with children of all ages and see it as a privilege to work alongside them supporting them to grow, develop and overcome their challenges.

It takes commitment to change lives



## **Primary Outreach Core Support Offer**

**working with schools and partner agencies to improve outcomes for vulnerable young people in Wokingham.**

### **Initial 7hr support package comprising:**

**Cost £315.00**

- Initial meeting with behaviour specialist, school and parents / carers
  - In school observation
  - Summary report with suggested strategies
  - Report feedback and planning meeting
    - Review meeting

### **Initial 10hr support package comprising:**

**Cost £450.00**

- Initial meeting with behaviour specialist, school and parents / carers
  - In school observation
  - Full report with suggested strategies
  - Report feedback and planning meeting
    - Review meeting

It takes commitment to change lives



### Additional support offered:

**Cost £45.00 per hour**

- Targeted in school support to implement report strategies
- In school or online half termly/termly behaviour surgeries for school staff/SENDCo
  - Additional review meetings
  - Teacher/TA supervision
- Key adult behaviour management modelling sessions
  - Attendance at annual reviews
- Attendance at EP and LSS surgeries upon request
  - Strategy meetings with key adults
- Support writing plans e.g. pastoral support plans (PSP's), positive handling plans (PHP's), individual behaviour plans (IBP's)
- Attendance at school planning meetings (SPM's) free of charge

### Bespoke outreach group programmes

Consisting of one or two behaviour specialists, dependent on the number of pupils, delivering targeted support over 6 sessions, pre and post meetings with school to set SMART targets.

Examples include -Social skills/team building, self-esteem/resilience

Cost on application

It takes commitment to change lives





## **Bespoke intervention packages**

**Cost £315.00**

**(6 hours of 1:1 support with a 1 hour review meeting unless stated otherwise)**

**All interventions will be discussed and agreed with school staff, parents/carers based on the individual needs of the pupil/pupils.**

**Examples include:**

- Anger management
  - Anxiety
- Behaviour management
  - Emotional literacy
  - Friendship skills
- Mental health and wellbeing
  - Mentoring
  - Resilience
  - Sand-tray
  - Self-esteem
  - Self-regulation
  - Social skills
- Theraplay® (7hrs of support with 1hr review) **Cost £360.00**



## **Transition Support Packages**

**Transition support (KS1 to KS2/KS2 to KS3) can be delivered as a 1:1 intervention or in a small group (up to 4 pupils)**

### **4hr Support package**

**Cost: 1:1 package £180.00 - Small Group £360.00**

4hrs of 1:1/group support delivered over four weeks during summer term 2

### **6hr Support package**

**Cost: 1:1 package £270.00 - Small group £540.00**

1hr initial meeting with school autumn term 1 to discuss pupil/s and targeted strategies to improve independence and resilience

Check-in meeting spring term one to review strategies and agree focus of the transition sessions

4hrs of 1:1/group work delivered over four weeks in summer term 2





### **Training offer**

**Bespoke training to meet the needs of your school. We can offer half day or twilight training sessions.**

**Half day (3hrs) training £400.00**

**Twilight (1.5hrs) training £200.00**

#### **Examples of training topics include:**

- ASD theory
  - The ASD friendly classroom
    - Attachment theory
  - The Attachment friendly classroom
  - Positive behaviour management
- Lunchtime controllers – The successful playground
  - Understanding ADHD
  - The ADHD friendly classroom
    - Social stories
  - Resilience Growth mindset

It takes commitment to change lives



Team Teach Training is available to maintained Wokingham  
Borough schools.



TEAM-TEACH TRAINING



**Positive Behaviour Management Level One 6hr course – specific to your requirements**

Courses are aimed at low risk service settings.

The course covers personal safety, guides and prompts, risk reduction strategies, positive handling, documentation and legal guidance.

Cost - £80 per place

**Positive Behaviour Management Level Two 12hr course – specific to your requirements**

Courses are aimed at low/medium risk service settings.

The course covers personal safety, guides and prompts, risk reduction strategies, positive handling, documentation and legal guidance. In addition, this course includes two-person physical intervention techniques.

Cost - £ 150.00 per place

For further information call Louise Brookes or Amy Beckwith-Verity on

0118 334 1510

or to book, please visit the Foundry College website

<http://www.foundry.wokingham.sch.uk/category/training-courses/>

It takes commitment to change lives



## **Emotional Based School Avoidance**

**This support package has been developed to support pupils initially in the home with the ultimate aim to aid transition back to their mainstream school.**

**The initial support package comprises of**

**(Cost dependent on initial meeting and home visit staffing requirements)**

**Initial meeting with school/parents (if not already open to Foundry Outreach Team)**

**Risk assessment home visit**

**Six 1:1 sessions initially in the home**

**Review meeting**

**Additional support package**

**Cost £315.00**

**Six 1:1 sessions in the home/school**

**Review meeting**

It takes commitment to change lives



## **Family Theraplay® Package**

**Cost £1950.00**

Theraplay® consists of a Behaviour Specialist trained to deliver family sessions using Theraplay® Techniques, working on site in our relaxing and engaging Therapy room.

Theraplay® is a structured therapeutic intervention for children and their parents. Its goal is to enhance attachment, self-esteem, trust in others and joyful engagement. The sessions are fun, physical, personal and interactive and replicate the natural, healthy interaction between parents and young children.

Children can be referred for a wide variety of problems including withdrawn or depressed behaviour, overactive – aggressive behaviour, temper tantrums, phobias, and difficulty socialising and making friends. Children are also referred for various behaviour and interpersonal problems resulting from learning disabilities, developmental delays, and pervasive developmental disorders or Autism Spectrum Conditions.

### **Support for pupils with EHCP for Specialist provision**

**Free of charge**

We have now employed an Outreach Worker to support pupils and schools by providing targeted in school support two mornings/afternoons a week for each pupil. The provision will include in class support, 1:1 or a mixture of both and will be provided in half term blocks.

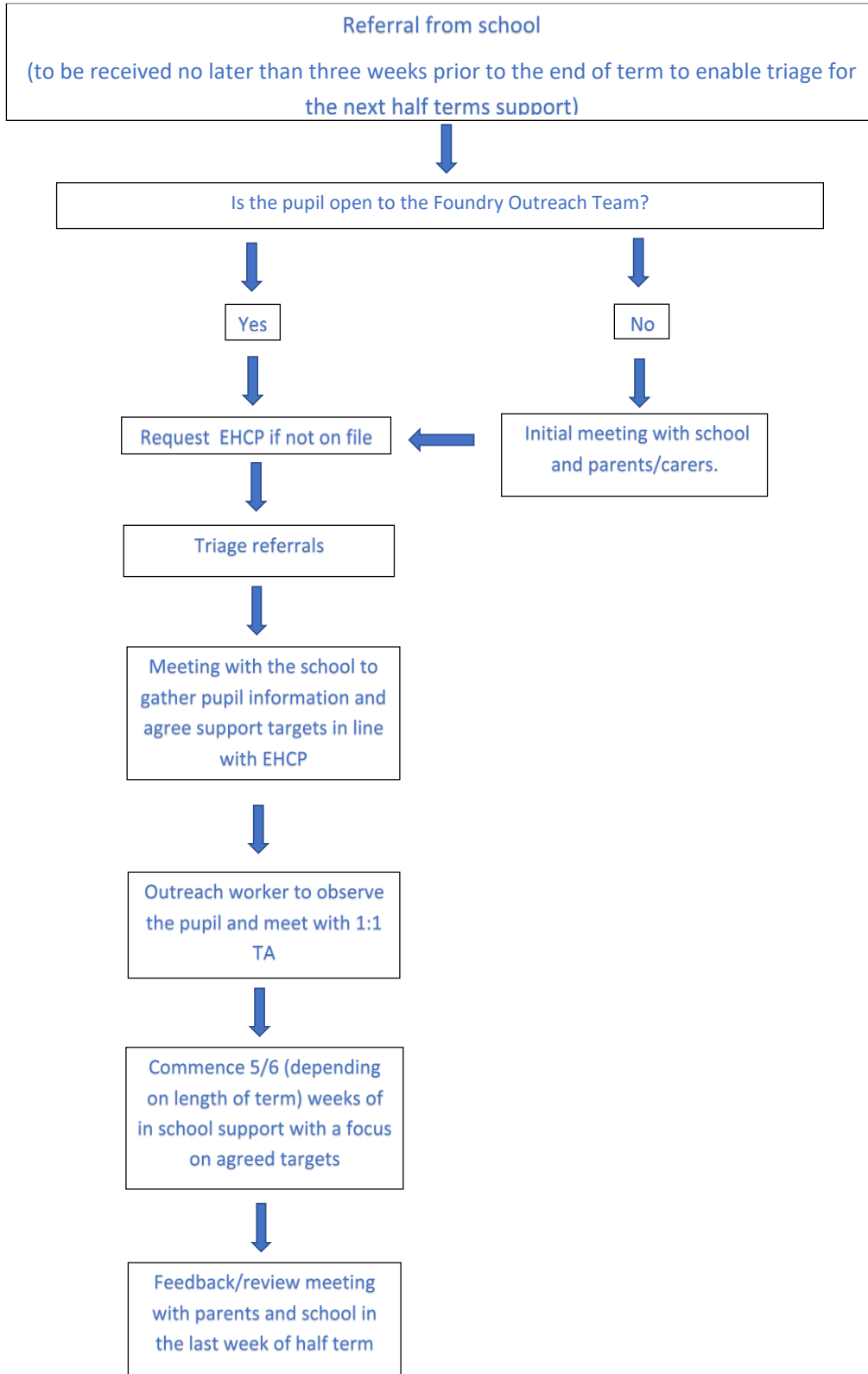
(Please see next page for the referral process to access this provision)

It takes commitment to change lives



# Foundry College

nurture · inspire · achieve



It takes commitment to change lives



All outreach referrals to be made via the Foundry  
College website

[www.foundry.wokingham.sch.uk](http://www.foundry.wokingham.sch.uk)

For all outreach enquiries please contact  
Louise Brookes - Outreach Strategic Lead

[Louise@foundry.wokingham.sch.uk](mailto:Louise@foundry.wokingham.sch.uk)

[0118 3341510](tel:01183341510)